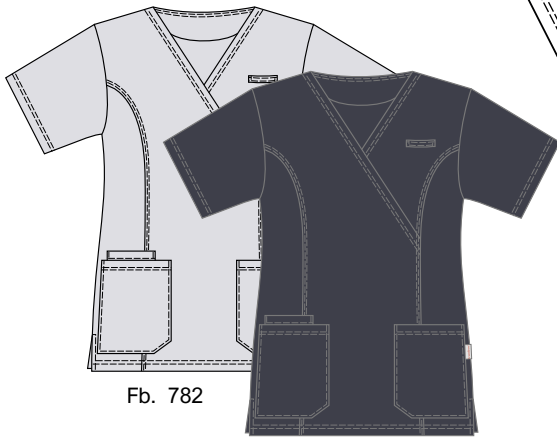


ALIDA - Damen-Schlupfkasack

Art. 1056

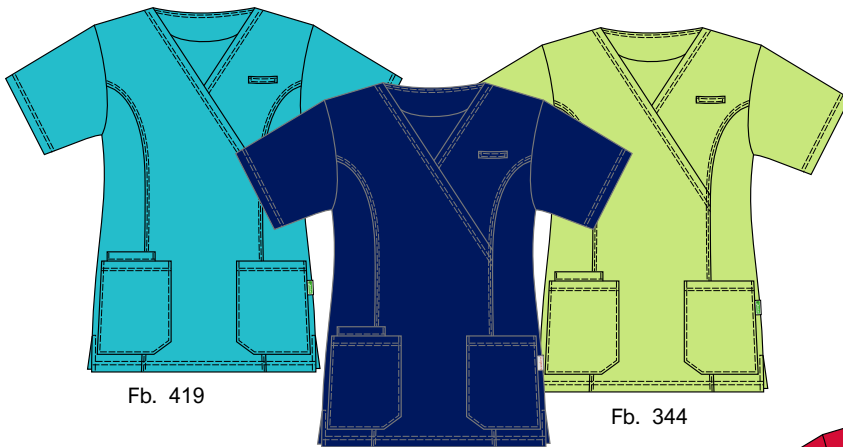
- + V-Ausschnitt
- + 1/4 Ärmel
- + 2 Seitentaschen mit Schlüsselschlaufe, rechts mit Handytasche
- + 1 Ausweisschlaufe links
- + Seitenschlitze



Fb. 782

Fb. 898

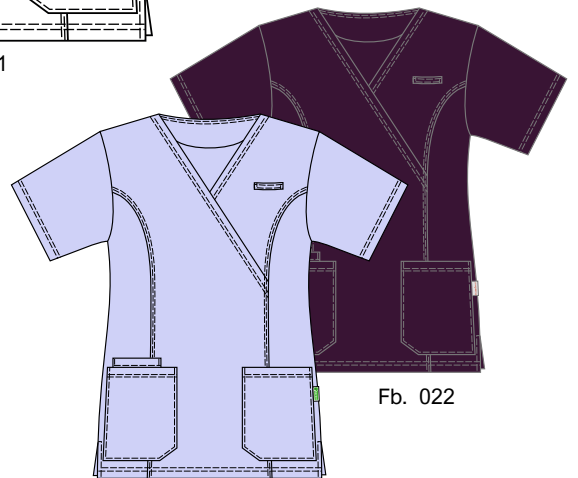
Fb. 001



Fb. 419

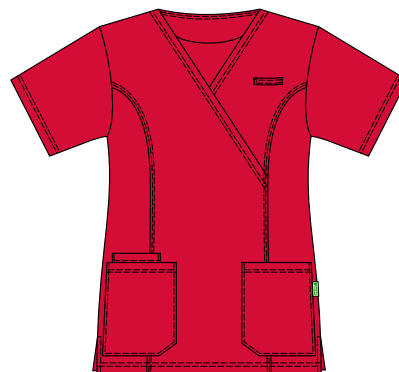
Fb. 039

Fb. 344

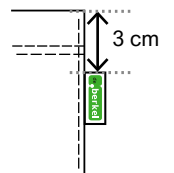


Fb. 881

Fb. 022



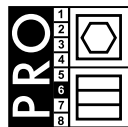
Fb. 587



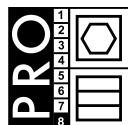
Schlüsselschlaufe

+ Größen: 34 - 58

+ Pflege weiße Kasacks:



+ Pflege farbige Kasacks:



+ Farben:

weiß	lichtgrau	anthrazit	türkis	marine	anisgrün	lavendel	cassis	rot
(001)	(782)	(898)	(419)	(039)	(344)	(881)	(022)	(587)

+ Material: 50% Lyocell (Tencel®) / 50% Polyester, 195 g/m², weiß 215 g/m²



Feels so right